

LANDWELL

兰德华



Cloud Patrol Series

G-100

Electronic Patrol

New Product

Good Patrol, Landwell

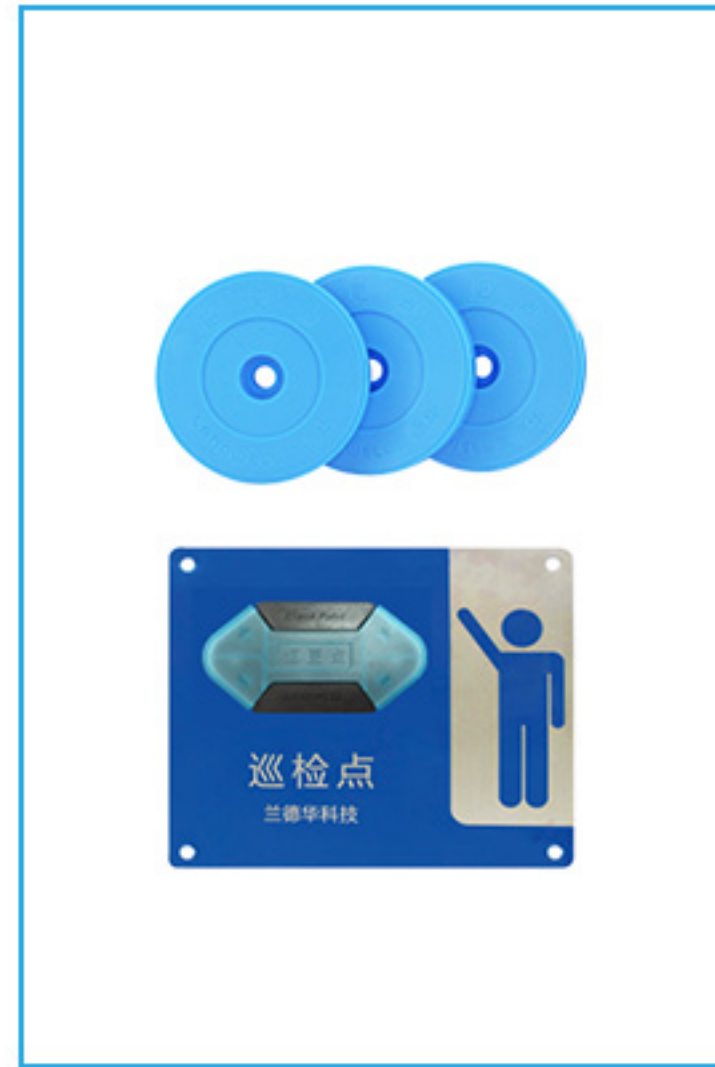
Listed as the Drafting Unit for the 'National Industry Standard for Electronic Patrol'



Cloud Patrol G-100
G100 with Display



Cloud Patrol G-100
Digital Smart Patrol



Checkpoint
RFID Contactless



Downloader
Magnetic

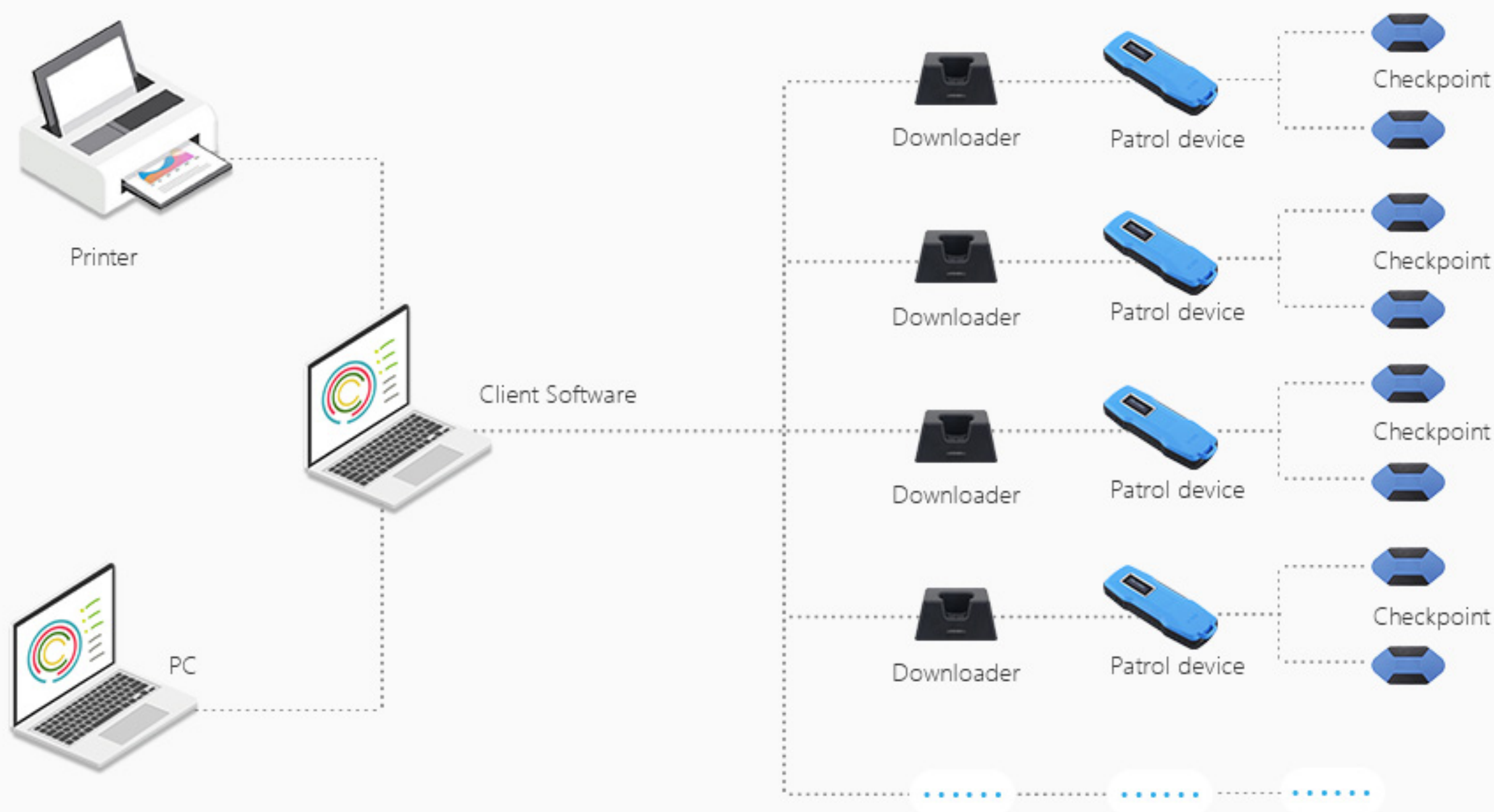
Cloud Patrol G-100 Smart Patrol

- Robust and Reliable
- 100% Easy to Maintain
- Long Battery Life
- Ultra-Low Power Consumption Design
- Advanced Craftsmanship with Dual-Color Injection Molded Casing



Durable, reliable, and easy to maintain - embodies the advantages in one

System Structure Diagram



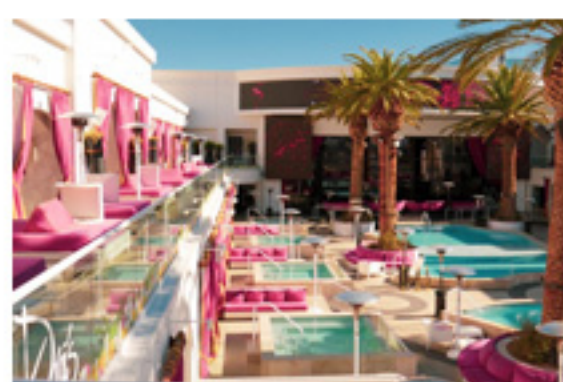
Main user cases



School



Hospital



Hotel



Airport



Gymnasium



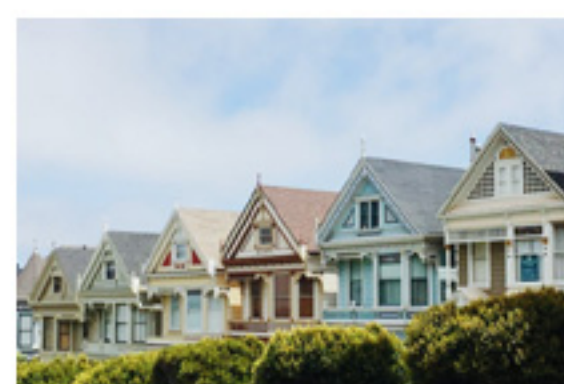
Construction site



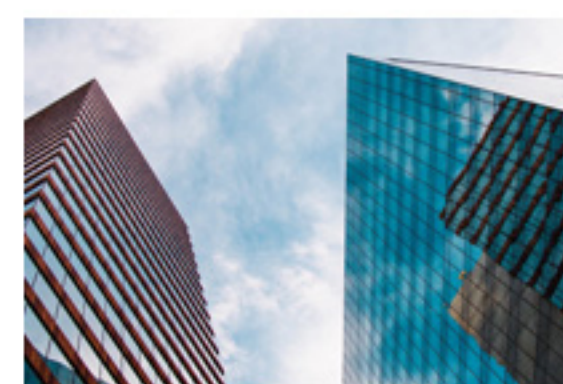
Manufacturing plant



Amusement park



Living area



Office building

Applications

Mainly used in: property patrol, industrial patrol, public safety, security department, petroleum and petrochemical, transportation system, warehousing logistics, mobile communication and other industries fixed asset management, etc.



System Overview:

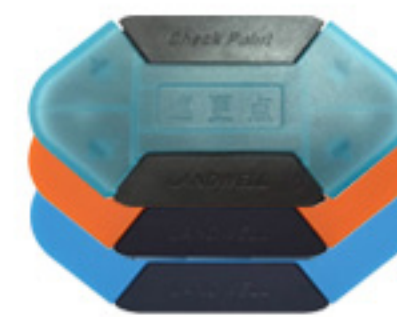
Cloud Patrol G-100 Smart Inductive Patrol Inspection Management System is a brand-new intelligent patrol and inspection solution developed by LANDWELL in 2019.

The casing is crafted using advanced dual-color injection molding technology and high-strength military-grade polycarbonate material. It meets the IP-68 standard for protection, featuring a magnetic absorption charging design, USB driver-free communication, LED high-intensity illumination, AI circuit design, SOS fall and impact alarm, OLED Chinese LCD display (except for digital models). The circuit design incorporates a unique intelligent self-check function to prevent freezing and ensure high-intensity LED illumination. LANDWELL has created an all-weather, high-quality patrol product.



Patrol device: Personnel follow a pre-designed plan for patrolling. Upon reaching designated patrol points, they gather information and input on-site data for various patrolling tasks. Patrolling device name, location, arrival time, patrolling route are all stored in the patroller.

Patrol device parameters	
Model	Cloud Patrol G-100
Protection level	IP 68
Storage	40000 messages
Interface	Magnetic Charging
Working temperature	-30°C ~ +70°C
Notification Methods	Screen Display or Vibration + Indicator Light
Dimensions	13×4.5×2.3cm
Read frequency	125KHz
Read range	125K 3-5cm
Standby time	60 days
Charging time	1-2 hours
Power mode	1800mAh
Weight	110G



Checkpoint: Displays the address or device name for patrolling, applied to designated patrolling sites or devices.

Personnel Card: Used to indicate the identity of patrolling personnel. Each time a patroller conducts a patrol, they first read their own identity card. The locations they patrol are then recorded under their name, making it easy to view and analyze data.

Checkpoint/Personnel Card Parameters

Product Name	Checkpoint
Dimensions	7.25×3.8×0.96cm
Product Name	Personnel Card
Dimensions	5.2×3.8×0.6cm



Downloader: Placing the patrol device into the Downloader utilizes a magnetic suction contact for connection. Stable and rapid transmission is achieved at a baud rate of 19200, while also providing the capability to charge the patrol device. This design achieves a completely interface-free configuration for the patrol device, preventing potential damage.

Downloader Parameters

Interface	USB
Baud rate	19200
Weight	104.3g
Dimensions	10.8×8.5×5cm

After-sale warranty

Adhering to the principle of 'Quality First, Reputation First, Service First,' the company ensures quality in design, procurement, processing, manufacturing, and engineering installation. With a focus on post-project service, meticulous arrangements are made to guarantee the quality of service.

After-sale Commitment:

Striving for "zero after-sales" product quality, we offer replacement without repair for strong assurance.

Lifetime access to 24/7 telephone technical consultations, online or email technical support.

Intelligent Patrol Management System

The Landwell Intelligent Patrol Management System is a centralized management software based on web browsers. It is designed to centrally manage almost all Landwell patrol devices that can run on browser devices, including mobile phones and PCs. It supports an unlimited number of patrol devices and tasks. Key advantages include easy deployment, modern graphical user interface, browser-based configuration, and remote management capabilities.

Administrators can clearly see the status of the devices inspected by patrol personnel and the work status of the personnel through a PC or mobile app. The system can provide information about missed inspections, incorrect points, and more. The management software allows for the statistical analysis of punctuality rates, error rates, missed inspection counts, event conditions, and other relevant information.

Additionally, the system allows for the creation of schedules to check whether patrol personnel are following the planned routes.

Standalone Version

The Landwell Intelligent Inspection Management System also offers a standalone software version for users to choose from.

